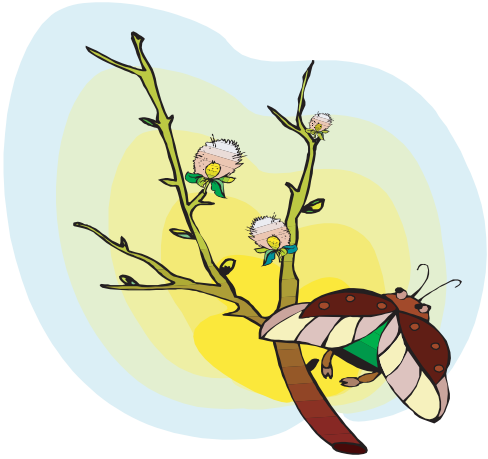


Signs of Spring

Signs of spring are all over. Find these specific signs and circle the words.



G I L I S S S L L S S W J W T
 P N V C D N E I L K Y I E A U
 B S I E N O N L A N A N C R R
 U D S M U W A A B U D D N M K
 D R R E O G R C T M R O A E E
 D I E L S O C S F P E W D R Y
 I B W T R N L N O I G S K W S
 N G O I E E L B S H N O C E C
 G N H N W S I T S C O P O A A
 T I S G O T H R T R L E C T L
 R G M J M I D Y O I E N D H L
 E N U T N N N L D B P W O E I
 E I X I W G A S N G I E O R N
 S S S D A C S E T I K N W L G
 S R A L L I P R E T A C S X F

Budding trees

Caterpillars

Chipmunks

Flowers blooming

Ice melting

Kites

Lawnmower sounds

Lilacs

Longer days

Nesting

Robins

Sandhill cranes

Showers

Singing birds

Snow gone

Softball

Turkeys calling

Warmer weather

Windows open

Woodcock dance

What signs of spring are you seeing where you live? Do you have a favorite?

Puzzle by Cheryl Riley for www.uplandtales.org, the online home for Ringneck & Whistlers!